

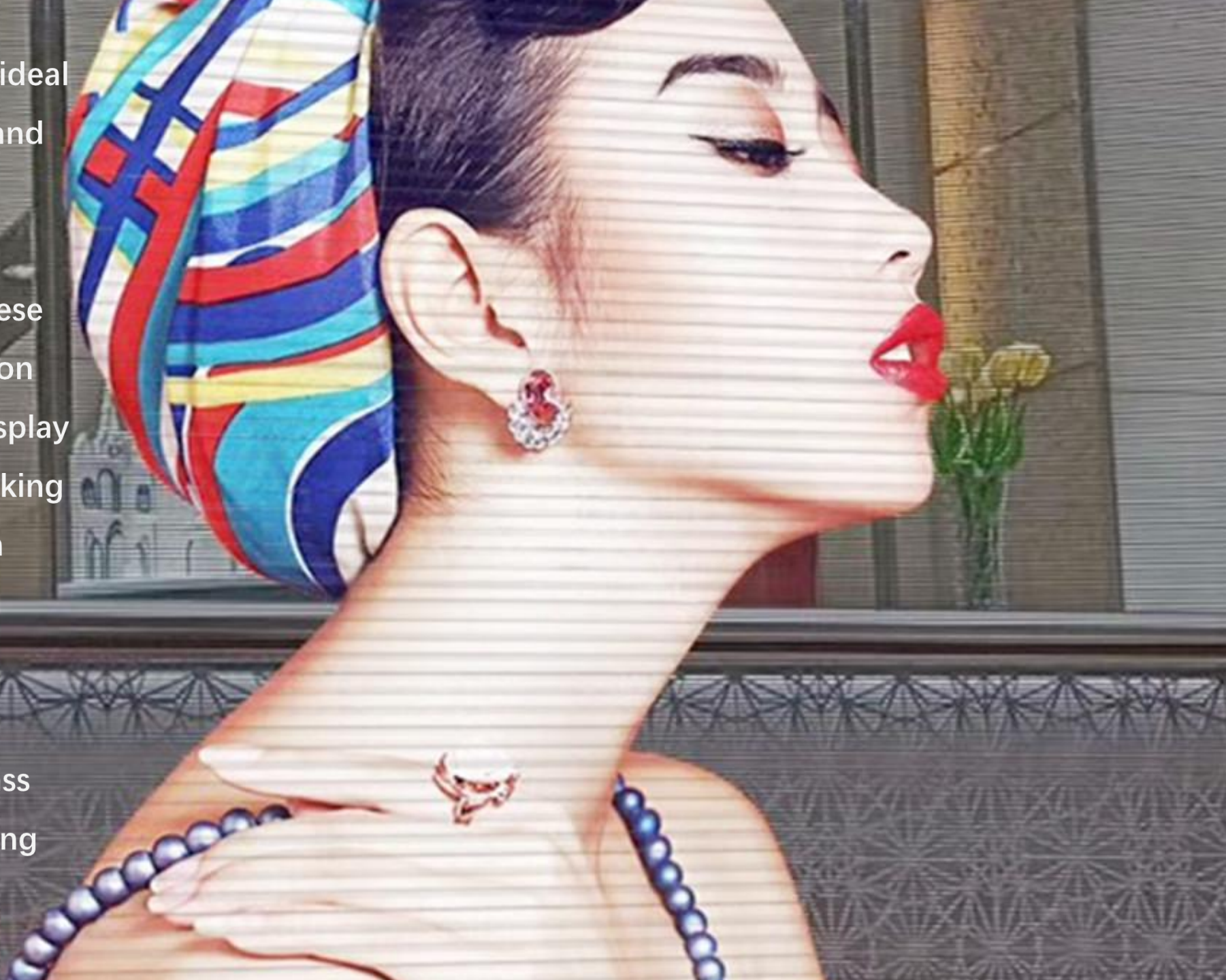


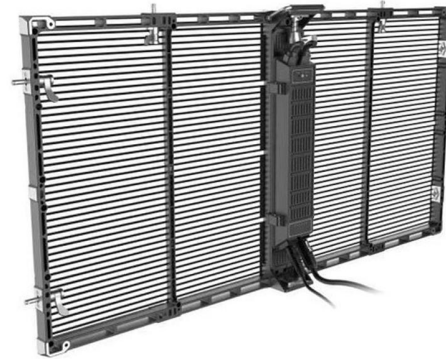
Transparent LED Display Screen

A Transparent LED Screen is ideal for indoor window displays and are commonly used for reinforcing a brand.

To advertise or to inform, these screens are an excellent option for anyone who wishes to display content in style without blocking out light or the view on both sides.

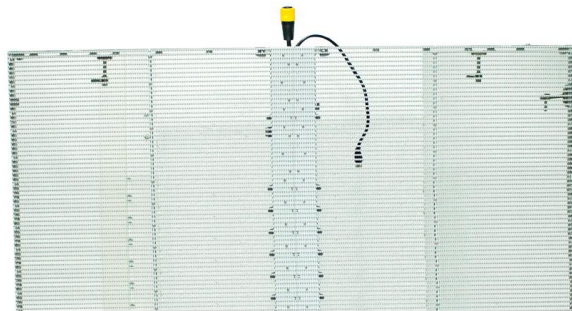
It allows designers to offer a screen solution for retail buildings with a focus on glass architecture without detracting from the overall design.





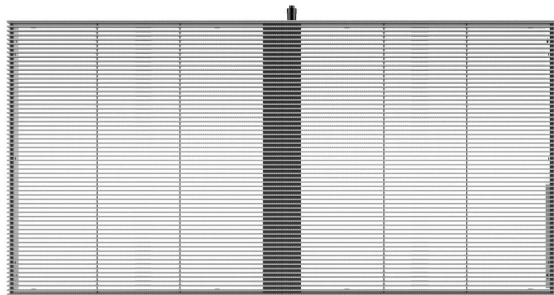
tClear Series Transparent LED Display Screen

- * P3.9/7.8, 1000x500mm
- * Tri-proof, with gel covered on LED surface
- * Die-casting aluminum cabinet
- * 55% transparency rate
- * Default brightness options : 800nits/2500nits/4500nits
- * High brightness available at request



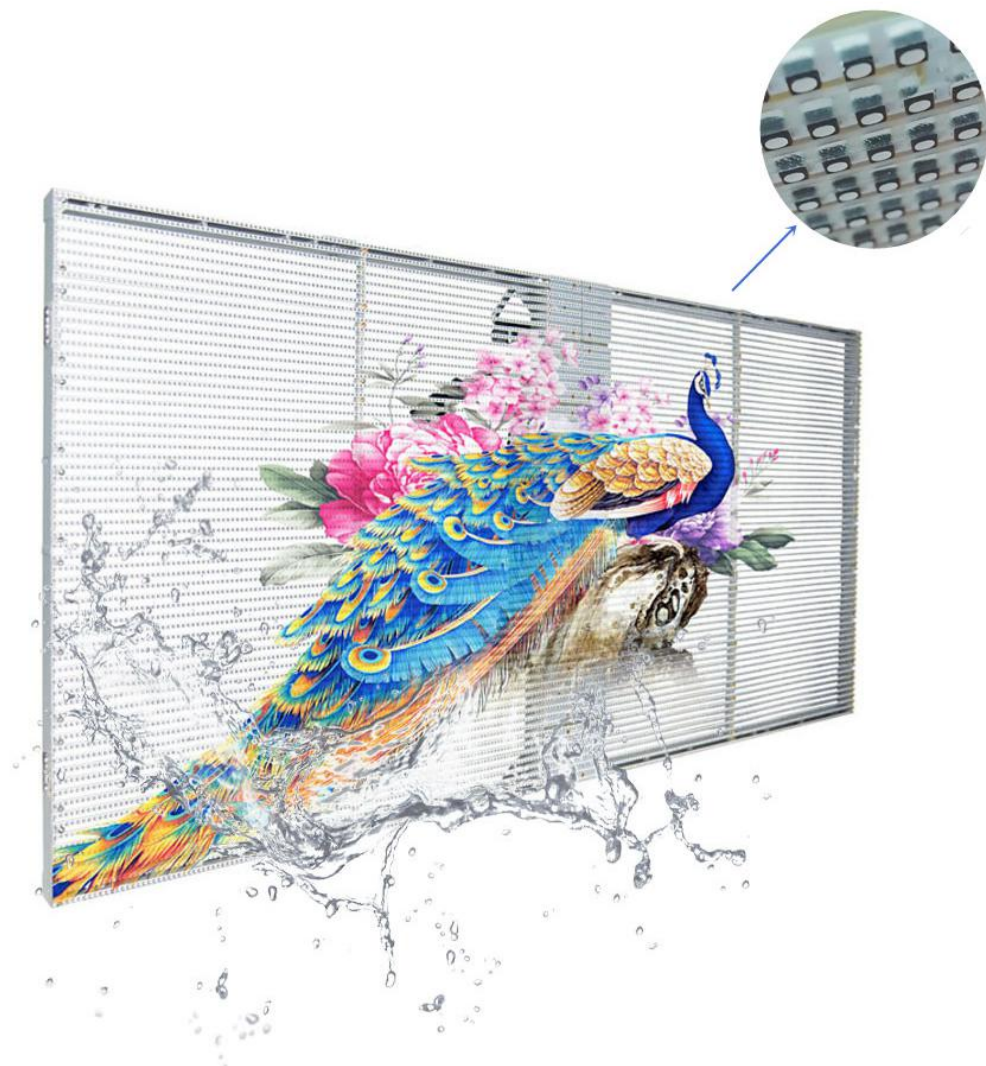
dClear Series Transparent LED Display Screen

- * P3.9/7.8, 1000x500mm
- * Unwired look at back, with fush designed power box
- * Die-casting aluminum cabinet
- * 55% transparency rate
- * Default brightness options : 800nits/2500nits/4500nits
- * High brightness available at request



aClear Series Transparent LED Display Screen

- * P3.9/7.8, 500x500mm/1000x500mm/1000x1000mm
- * Unwired look at back, with covering module for joints
- * Aluminum cabinet
- * 60% transparency rate
- * Default brightness options : 1500nits/4500nits
- * High brightness available at request



TRI-PROOF

This Transparent LED Screen, the surface is covered by gel, which can protect from water, dust and attack.

tClear Series (Tri-proof) Transparent LED Display Screen Specification			
PART NUMBER BREAKDOWN			
HKtC-P3/7-L: HK【Company Logo : HUAKE】- tC【Series Code : t Clear】- P3/7【Pixel Pitch:Horizontal 3.9mm, Vertical 7.8mm】- L【Brightness Level : Low】			
Part No.	HKtC-P3/7-L	HKtC-P3/7-M	HKtC-P3/7-H
Pixel Pitch	P3.9/7.8mm	P3.9/7.8mm	P3.9/7.8mm
LED	SMD2121	SMD1921	SMD1921
Scan	16	16	8
Viewing Distance	>5m	>5m	>5m
Cabinet Type	Aluminum	Aluminum	Aluminum
Cabinet Size	1000*500*80mm	1000*500*80mm	1000*500*80mm
Cabinet Qty./m²	2	2	2
Cabinet Pixles	16384dots	16384dots	16384dots
Pixel Density	32768dots/m²	32768dots/m²	32768dots/m²
Power Consumption	Max.150W/m² Avg.300W/m²	Max.260W/m² Avg.880W/m²	Max.260W/m² Avg.880W/m²
Brightness	800cd/m²	2500cd/m²	4500cd/m²
Transparency Rate	55%		
Contrast Rate	3000:1		
Color Depth	16bit		
Grey Level	16384		
Refresh Frequency	>1920HZ	>1920HZ	>3840HZ
Driving IC	MBI/ICN		
Color Uniformity	≥97%		
Viewing Angle	H:160deg. V:160deg.		
Blind Spot Rate	≤0.0003		
Life span	≥100,000 hours		
Cabinet Weight	7.5Kgs		
Protection Rating	IP65 at front, IP30 at back		
Operating Temperature	-20℃ ~ 60℃(-4°F ~ 140°F)		
Operating Humidity	10% ~ 90%		
Input voltage	AC100-240V		
Power Supply	Standard: CE*1 / Premium:UL CE MeanWell *1 (optional)		
Controlling System	Nova		
Maintainance	Front / Rear Installation; Front/Back Maintenance		



UNWIRED LOOK

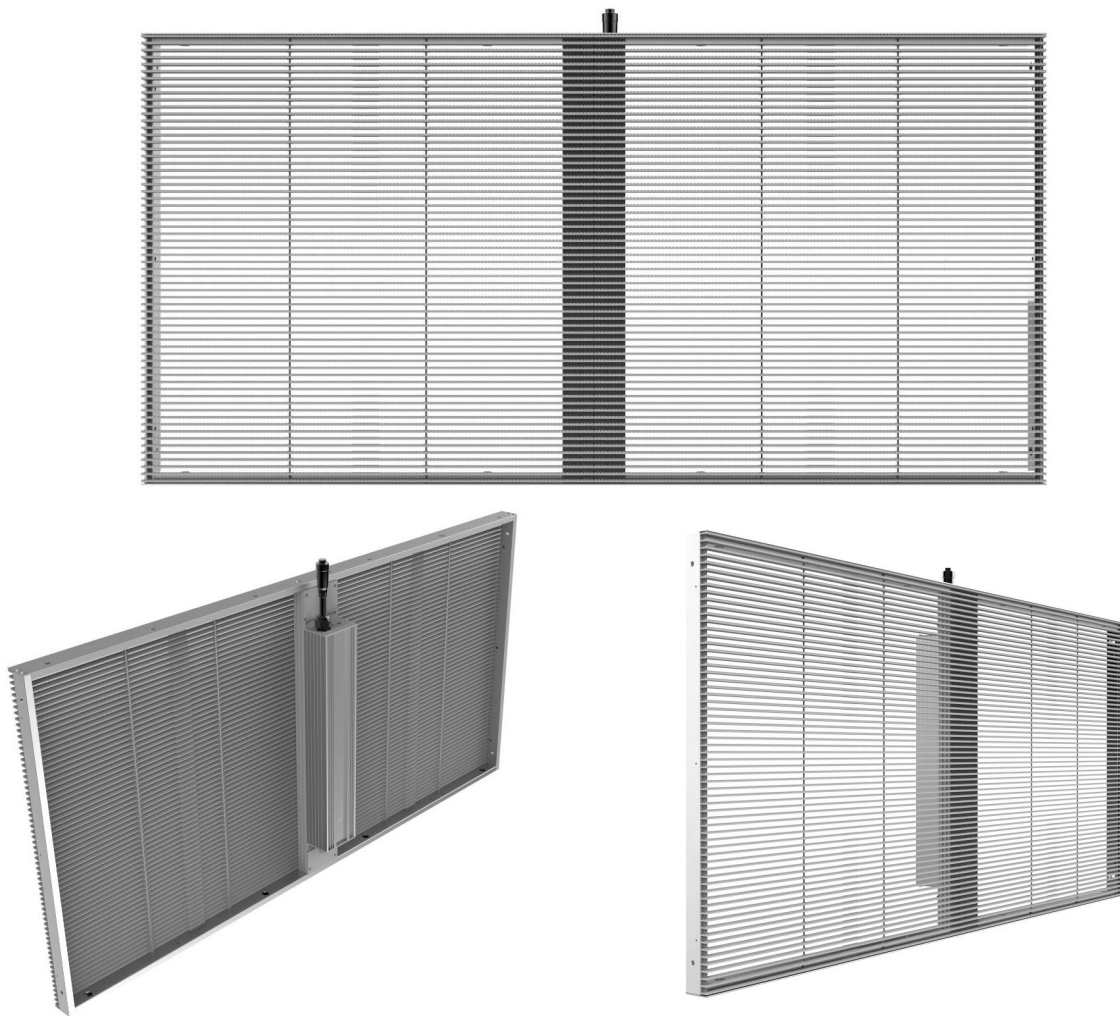
The Transparent LED Screen cabinet backing,
the power and wire box is flushed with the edge of the cabinet,
all wire connections will be hidden inside the box.
After installation will provide a neat unwires look.

dClear Transparent LED Display Screen Specification

PART NUMBER BREAKDOWN

HKdC-P3/7-L: HK 【Company Logo : HUAKE】 - dC 【Series Code : d Clear】 - P3/7 【Pixel Pitch:Horizontal 3.9mm, Vertical 7.8mm】 - L 【Brightness Level : Low】

Part No.	HKdC-P3/7-L	HKdC-P3/7-M	HKdC-P3/7-H
Pixel Pitch	P3.9/7.8mm	P3.9/7.8mm	P3.9/7.8mm
LED	SMD2121	SMD1921	SMD1921
Scan	16	16	8
Viewing Distance	>5m	>5m	>5m
Cabinet Type	Aluminum	Aluminum	Aluminum
Cabinet Size	1000*500*80mm	1000*500*80mm	1000*500*80mm
Cabinet Qty./m²	2	2	2
Cabinet Pixles	16384dots	16384dots	16384dots
Pixel Density	32768dots/m²	32768dots/m²	32768dots/m²
Power Consumption	Max.150W/m² Avg.300W/m²	Max.260W/m² Avg.880W/m²	Max.260W/m² Avg.880W/m²
Brightness	800cd/m²	2500cd/m²	4500cd/m²
Transparency Rate		55%	
Contrast Rate		3000:1	
Color Depth		16bit	
Grey Level		16384	
Refresh Frequency	>1920HZ	>1920HZ	>3840HZ
Driving IC		MBI/ICN	
Color Uniformity		≥97%	
Viewing Angle		H:160deg. V:160deg.	
Blind Spot Rate		≤0.0003	
Life span		≥100,000 hours	
Cabinet Weight		7Kgs	
Protection Rating		IP30	
Operating Temperature		-20°C ~ 60°C(-4°F ~ 140°F)	
Operating Humidity		10% ~ 90%	
Input voltage		AC100-240V	
Power Supply	Standard: CE*1 / Premium:UL CE MeanWell *1 (optional)		
Controlling System	Nova		
Maintainance	Front / Rear Installation; Front/Back Maintenance		



UNWIRED LOOK

At the back between every two Tranparent LED Screen cabinet connection, an extra aluminum block is used to cover the joint to hide all wire connections.

aClear Transparent LED Display Screen Specification

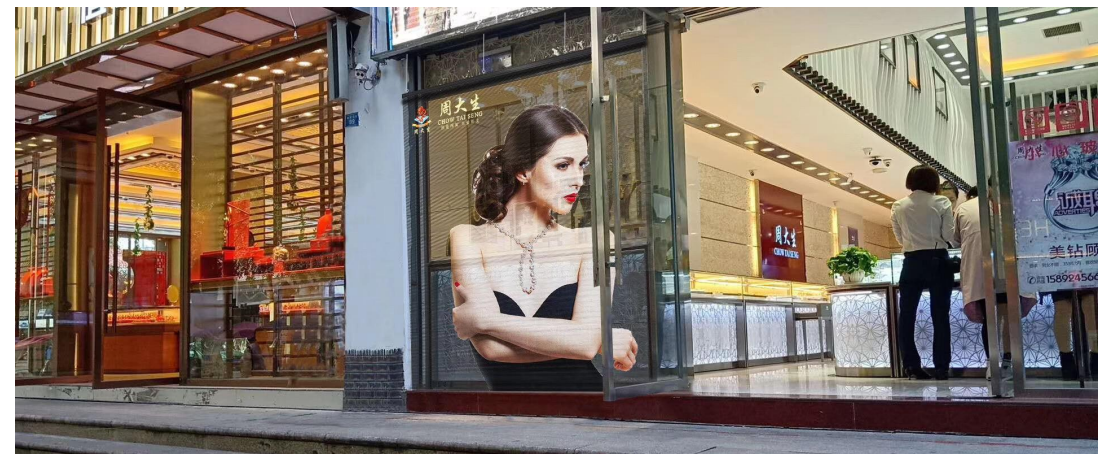
PART NUMBER BREAKDOWN

HKaC-P3/7-LA: HK 【Company Logo : HUAKE】 - aC 【Series Code : a Clear】 - P3/7 【Pixel Pitch:Horizontal 3.9mm, Vertical 7.8mm】 - L 【Brightness Level : Low】 - A 【Cabinet Size A: 500x500mm】

Part No.	HKaC-P3/7-LA	HKaC-P3/7-HA	HKaC-P3/7-LB	HKaC-P3/7-HB	HKaC-P3/7-LC	HKaC-P3/7-HC
Pixel Pitch	P3.9/7.8mm	P3.9/7.8mm	P3.9/7.8mm	P3.9/7.8mm	P3.9/7.8mm	P3.9/7.8mm
LED	SMD2121	SMD1921	SMD2121	SMD1921	SMD2121	SMD1921
Scan	16	8	16	8	16	8
Viewing Distance	>5m	>5m	>5m	>5m	>5m	>5m
Cabinet Type	Aluminum	Aluminum	Aluminum	Aluminum	Aluminum	Aluminum
Cabinet Size	500*500*80mm		1000*500*80mm		1000*1000*80mm	
Cabinet Qty./m ²	4	4	2	2	1	1
Cabinet Pixles	8192dots	8192dots	16384dots	16384dots	32768dots	32768dots
Pixel Density	32768dots/m ²	32768dots/m ²	32768dots/m ²	32768dots/m ²	32768dots/m ²	32768dots/m ²
Power Consumption	Max.150W/m ² Avg.300W/m ²					
Brightness	1500cd/m ²	4500cd/m ²	1500cd/m ²	4500cd/m ²	1500cd/m ²	4500cd/m ²
Transparency Rate	60%					
Contrast Rate	3000:1					
Color Depth	16bit					
Grey Level	16384					
Refresh Frequency	>1920HZ					
Driving IC	MBI/ICN					
Color Uniformity	≥97%					
Viewing Angle	H:160deg. V:160deg.					
Blind Spot Rate	≤0.0003					
Life span	≥100,000 hours					
Cabinet Weight	7Kgs					
Protection Rating	IP30					
Operating Temperature	-20°C ~ 60°C(-4°F ~ 140°F)					
Operating Humidity	10% ~ 90%					
Input voltage	AC100-240V					
Power Supply	Standard: CE*1 / Premium:UL CE MeanWell *1 (optional)					
Controlling System	Nova					
Maintainance	Front / Rear Installation; Front/Back Maintenance					

GET ATTRACTIVE

This transparent screen opens up new creative options that were not possible with LCD screens and other LED screens.



BRIGHT ENOUGH

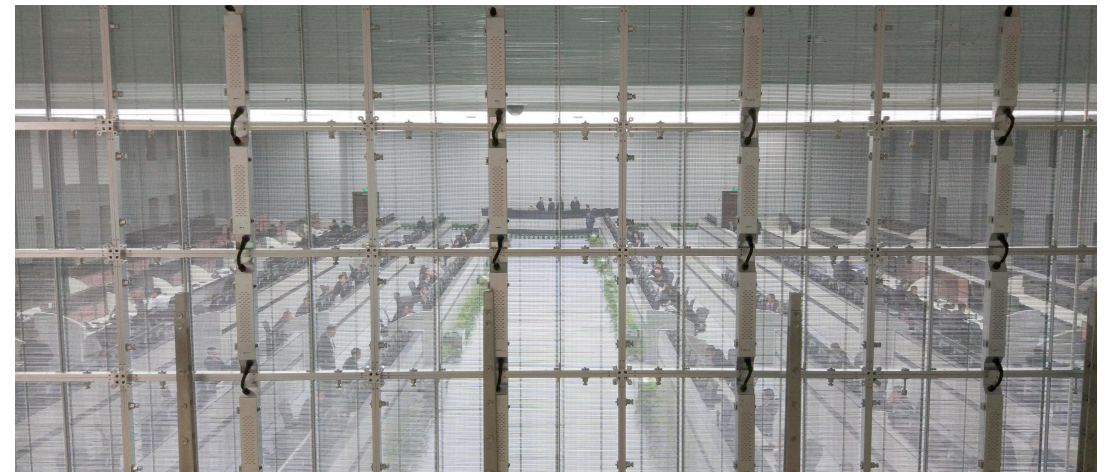
With brightness range from 800nits to 6000nits, the Transparent LED Screens are visible for both indoor and outdoor daylight from a great distance.



TRANSPARENCY

Traditional LED window displays act as a dark wall, so shoppers can't see in, and they block sunlight, so your indoor areas need to rely on unnatural lighting.

The Transparent LED screen allow people by both sides of the display can see each other.



MODULAR DESIGN - build the size you need

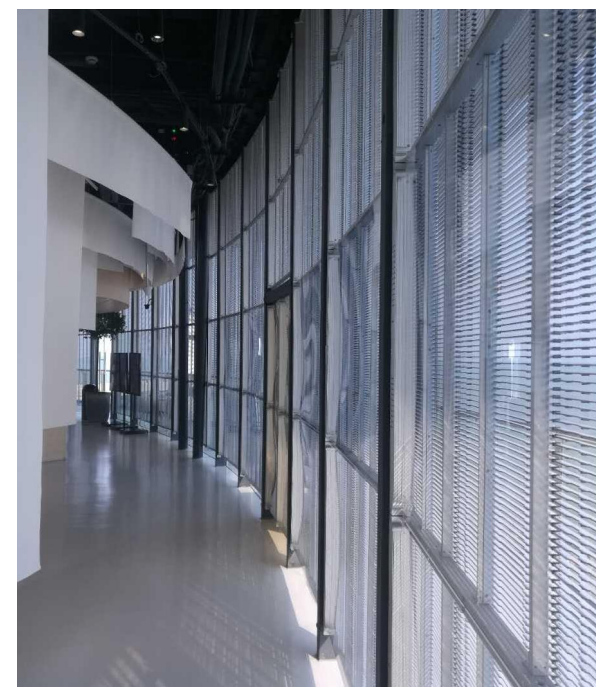
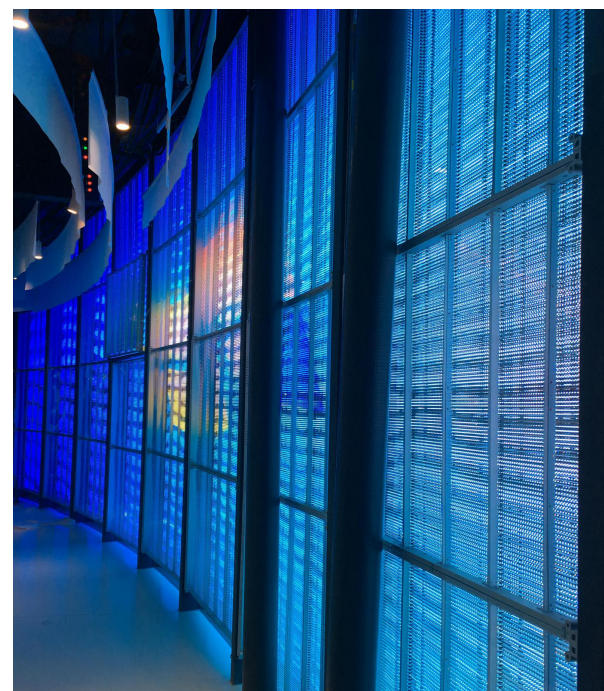
Available in small cabinet 500x500 ,
1000x500, and 1000x1000,
that can freely combine into large format LED Screens

EASY SETUP and INSTALLATION

Using lightweight engineered aluminum,
the Transparent LED Screen is only 14-15kgs/sqm.
With fast lock, and plug-in connectors,
just need to pull and push, then plug and play.

CUSTOMIZED OR OUT OF THE BOX

Besides standard size cabinet panels,
the Transparent LED display can also be customized
to fit abnormal shapes or sizes.



Applications:

Windows, glass walls & facades

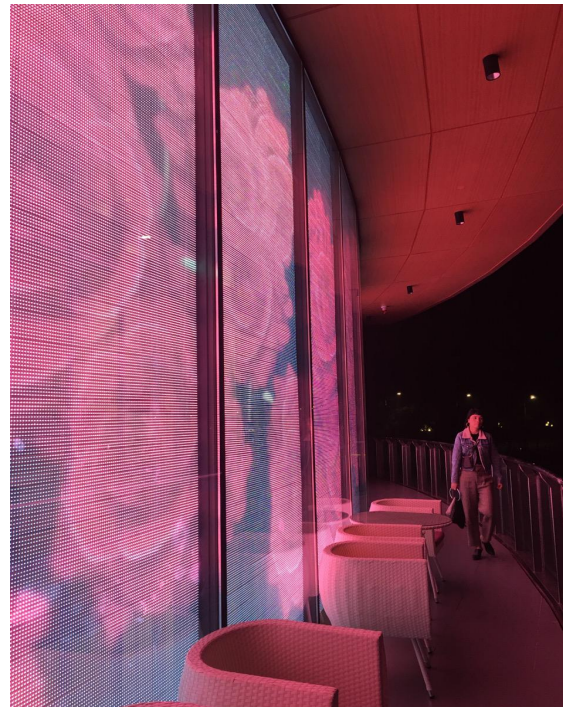
Corporate buildings & offices

Retail stores & shopping centres

Stadiums & arenas

Hotels & airports

Car showrooms





Co

SHENZHEN HUAKE LIGHT ELECTRONICS CO., LTD.
HUAKE LIMITED

Web

<https://www.360digitalsignage.com>



Tel: +86-755 8306 6884

Add

1#, ChaXi SanWei Industrial Zone, GuShu, XiXiang, BaoAn
ShenZhen, GuangDong, 518126, China.



info@360digitalsignage.com